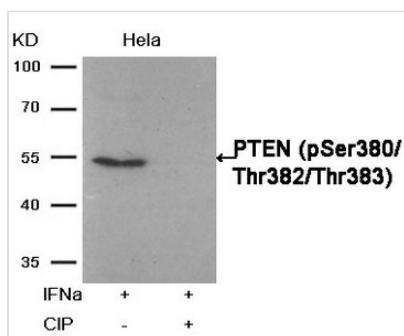




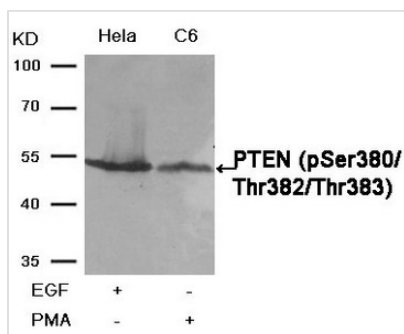
# Phospho-PTEN (Ser380/Thr382/Thr383) Antibody

<b>Product Code</b>	CSB-PA909192
<b>Storage</b>	Upon receipt, store at -20°C or -80°C. Avoid repeated freeze.
<b>Uniprot No.</b>	P60484
<b>Immunogen</b>	Peptide sequence around phosphorylation site of threonine 380/382/383 (R-Y-S(p)-D-T(p)-T(p)-D-S) derived from Human PTEN.
<b>Raised In</b>	Rabbit
<b>Species Reactivity</b>	Human,Mouse,Rat
<b>Tested Applications</b>	ELISA,WB,IHC,IF;WB:1:500-1:1000,IHC:1:50-1:100,IF:1:100-1:200
<b>Form</b>	Liquid
<b>Storage Buffer</b>	Liquid in PBS containing 50% glycerol, 0.5% BSA and 0.02% sodium azide.
<b>Purification Method</b>	Antibodies were produced by immunizing rabbits with synthetic phosphopeptide and KLH conjugates. Antibodies were purified by affinity-chromatography using epitope-specific phosphopeptide. Non-phospho specific antibodies were removed by chromatography
<b>Clonality</b>	Polyclonal
<b>Product Type</b>	Polyclonal Antibody
<b>Immunogen Species</b>	Homo sapiens (Human)
<b>Target Names</b>	PTEN

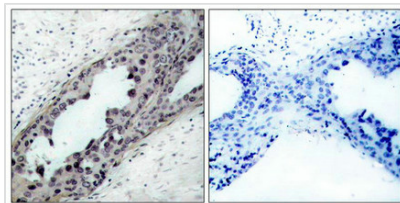
## Image



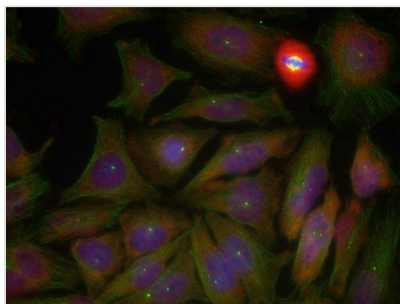
Western blot analysis of extracts from HeLa cells, treated with IFNα or calf intestinal phosphatase (CIP), using PTEN (Phospho-Ser380/Thr382/Thr383) Antibody.



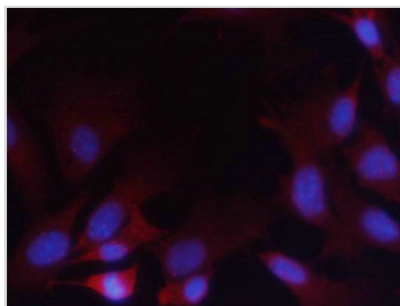
Western blot analysis of extracts from HeLa and C6 cells, treated with EGF or PMA, using PTEN (Phospho-Ser380/Thr382/Thr383) Antibody.



Immunohistochemical analysis of paraffin-embedded human breast carcinoma tissue, using PTEN(Phospho-Ser380/Thr382/Thr383) Antibody(left) or the same antibody preincubated with blocking peptide(right).



Immunofluorescence staining of methanol-fixed HeLa cells using PTEN(Phospho-Ser380/Thr382/Thr383) Antibody.



Immunofluorescence staining of methanol-fixed MEF cells using PTEN (Phospho-Ser380/Thr382/Thr383)Antibody.

## Usage

For Research Use Only. Not for use in diagnostic or therapeutic procedures.